



BLIND DESIGNS™
REFLECT YOUR STYLE

SIMPLE
ELEGANCE



LOUVOLITE

SHEERWEAVE
BY PHIFER

SHAW
Performance Fabrics

ROLLER
BLINDS

SCREEN ROLLER BLINDS

Screen Roller Blinds are as beautiful as they are practical. The woven fabrics allow a view to the outside while effectively controlling heat and glare. Make your choice from a wide variety of fashionable colours. Use a tightly woven fabric (1% open) to control maximum glare or use a 10% open fabric to maximise your view.



SCREEN ROLLER **BLINDS**

- Modern and Versatile
- Control Heat and Glare
- Maintain Your View
- Choice of 1%, 3%, 5% and 10% Fabric Openness
- Wide Range of Colours



AVAILABLE ACCESSORIES



220V Motorisation



Battery Motorisation



Valances



BLIND DESIGNS™
REFLECT YOUR STYLE

BLOCKOUT ROLLER BLINDS

A Blockout Roller Blind is perfect for any area where you require full light or privacy control. Available in a wide range of colours and textures, the roller blind hardware is also available in a choice of 4 colours. The Blockout Roller Blind features durable practicality with decorative style.



BLOCKOUT ROLLER **BLINDS**

- Blockout Light
- Full Privacy
- Extensive, Modern Colour Range
- Wide choice of Fabric Textures
- A wide selection of easy to clean fabrics



AVAILABLE ACCESSORIES



220V Motorisation



Battery Motorisation



Valances



BLIND DESIGNS™
REFLECT YOUR STYLE

LIGHT FILTER ROLLER BLINDS

A Light Filtering Roller Blind features a fabric that provides a degree of privacy while still allowing you to harness your natural light for a room. The Light Filtering Blind is a great way to add texture to a room as the combination of the weave accentuated by the light adds depth to your décor.



LIGHT FILTER ROLLER **BLINDS**

- Gently Filter the Light
- Control Privacy
- Introduce Natural Light into the Room
- Reduce the need for artificial light



AVAILABLE ACCESSORIES



220V Motorisation



Battery Motorisation



Valances



BLIND DESIGNS™
REFLECT YOUR STYLE

The Designer Fabric Collection is a vibrant collection of texture, patterns and colours. Make a luxurious statement with our designer prints and patterns. Playful contemporary prints for kid's room. Hand picked colours to accent any interior. Add warmth and contrast to your interior with layers of textures and fabrics.



DESIGNER FABRIC ROLLER **BLINDS**

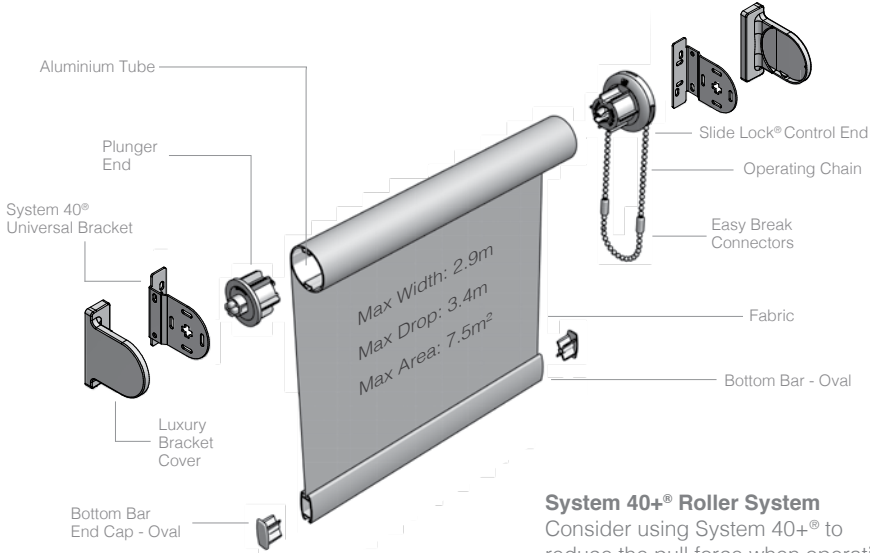
- Wide Range of Fabrics to Suit all Tastes
- Dress your windows in the latest Fashion Fabrics
- Luxurious Textures
- Vibrant Colours



BLIND DESIGNS™
REFLECT YOUR STYLE

SYSTEM 40® AND 40+® ROLLER SYSTEM

Diagram shows: System 40®, Face Fix - Standard Metal Bracket



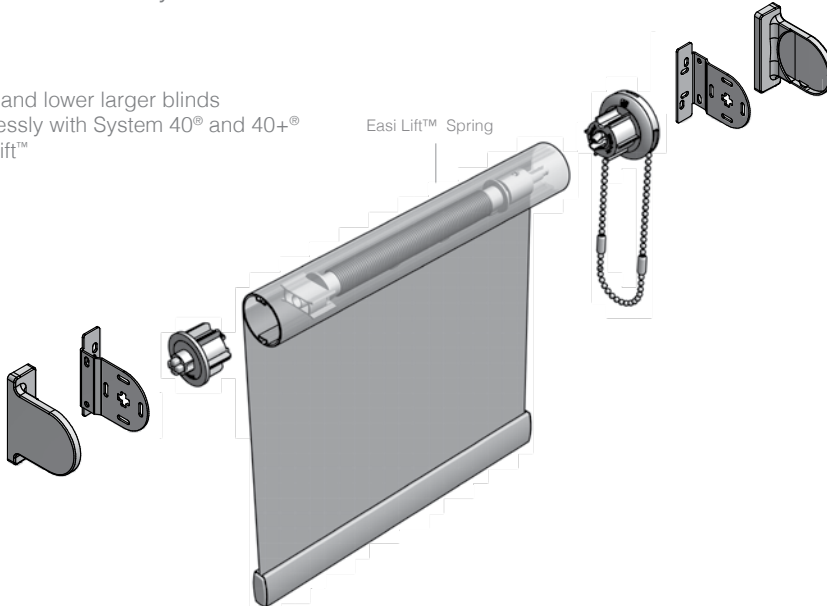
System 40+® Roller System

Consider using System 40+® to reduce the pull force when operating larger blinds.

SYSTEM 40® AND 40+® EASI LIFT™

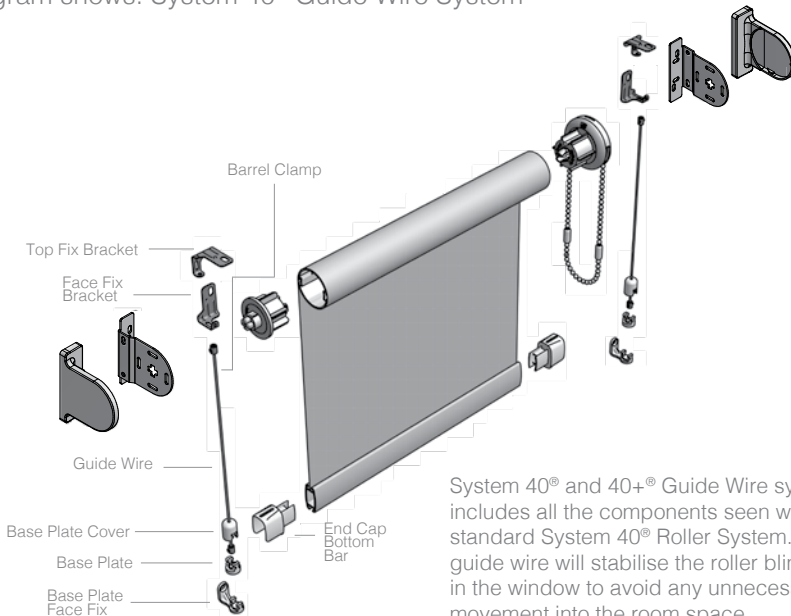
Diagram shows: System 40® Easi Lift™

Raise and lower larger blinds effortlessly with System 40® and 40+® Easi Lift™



SYSTEM 40® AND 40+® GUIDE WIRE SYSTEM

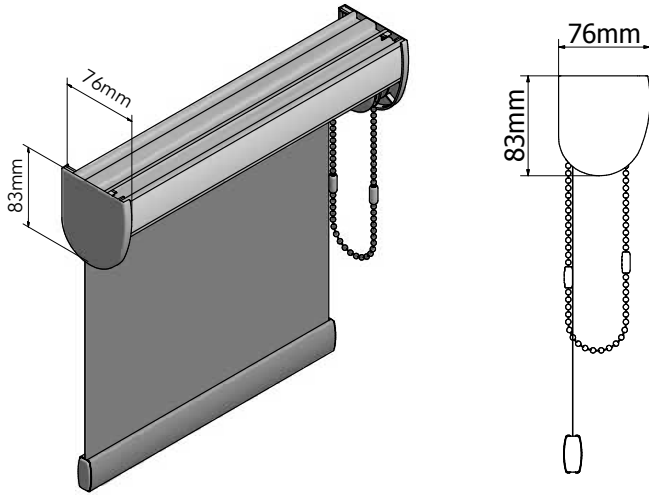
Diagram shows: System 40® Guide Wire System



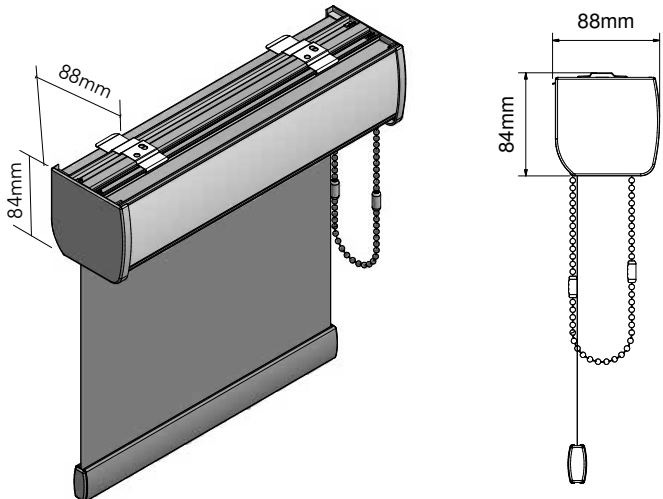
System 40® and 40+® Guide Wire system includes all the components seen with the standard System 40® Roller System. The guide wire will stabilise the roller blind in the window to avoid any unnecessary movement into the room space.



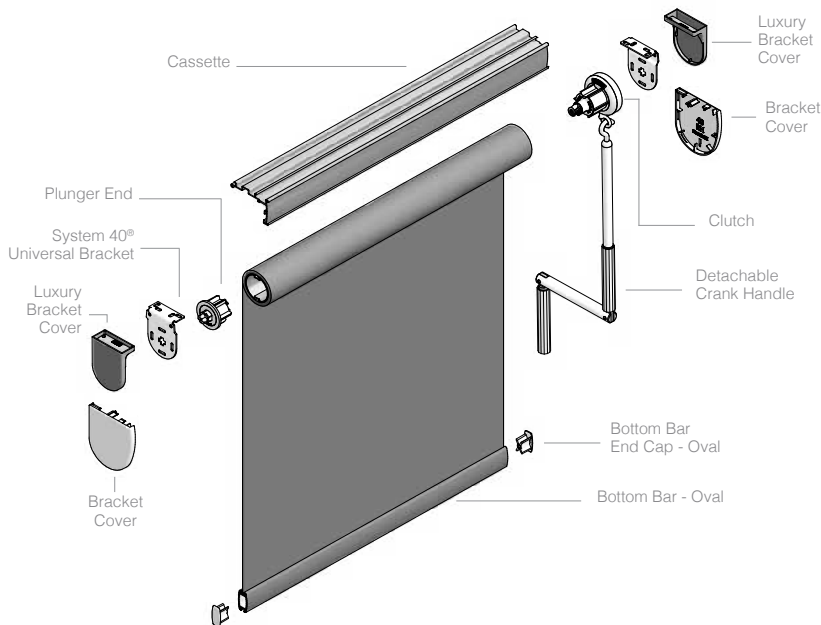
SYSTEM 40® OPEN CASSETTE



SYSTEM 40® 70MM CASSETTE

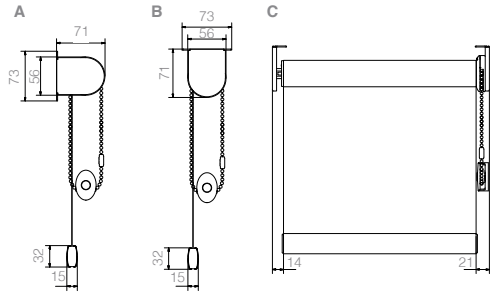


SYSTEM 40® CRANK SYSTEM



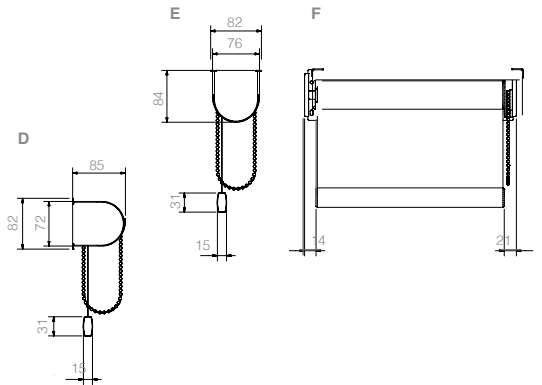
SYSTEM 40® AND 40+® - BRACKET DIMENSIONS

System 40®



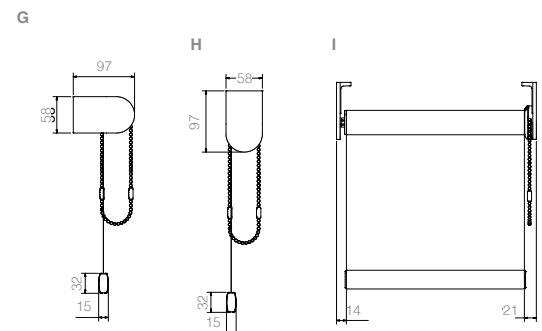
- A. System 40® Standard Metal Bracket Face Fix
- B. System 40® Standard Metal Bracket Top Fix
- C. System 40® Standard Metal Bracket Top Fix Front View

System 40+®



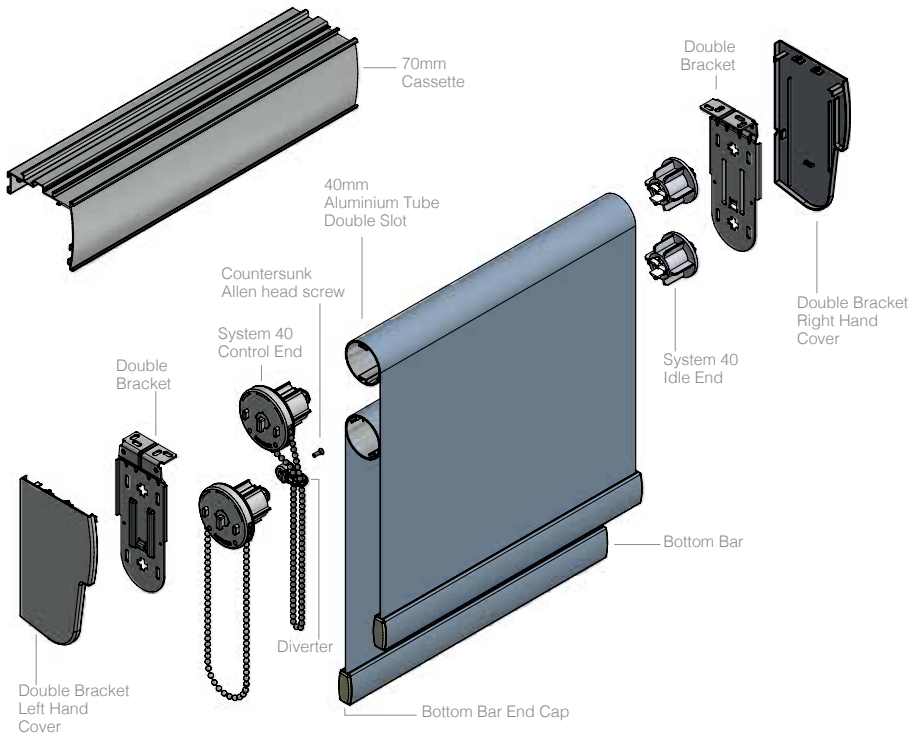
- D. System 40+® Standard Metal Bracket Face Fix
- E. System 40+® Standard Metal Bracket Top Fix
- F. System 40+® Standard Metal Bracket Top Fix Front View

System 40® Extension Bracket

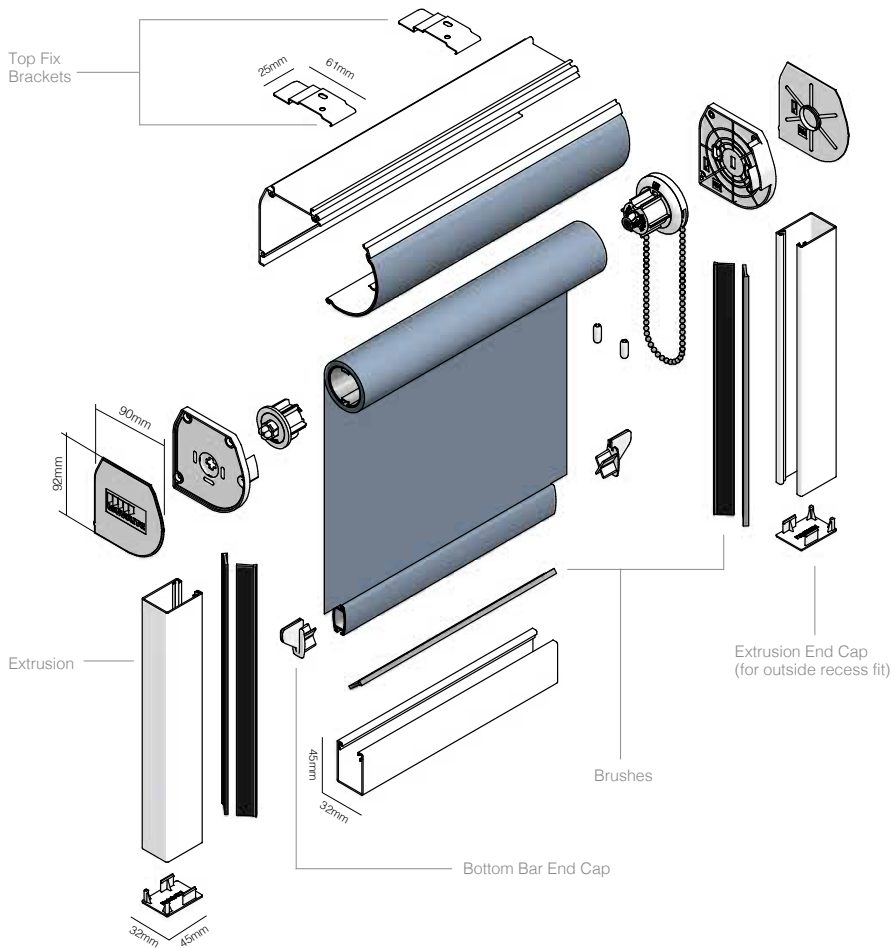


- G. System 40® Extended Metal Bracket Face Fix & Cover
- H. System 40® Extended Metal Bracket Top Fix & Cover
- I. System 40® Extended Metal Bracket Top Fix Front View & Cover

SYSTEM 40® DOUBLE BRACKET ROLLER SYSTEM

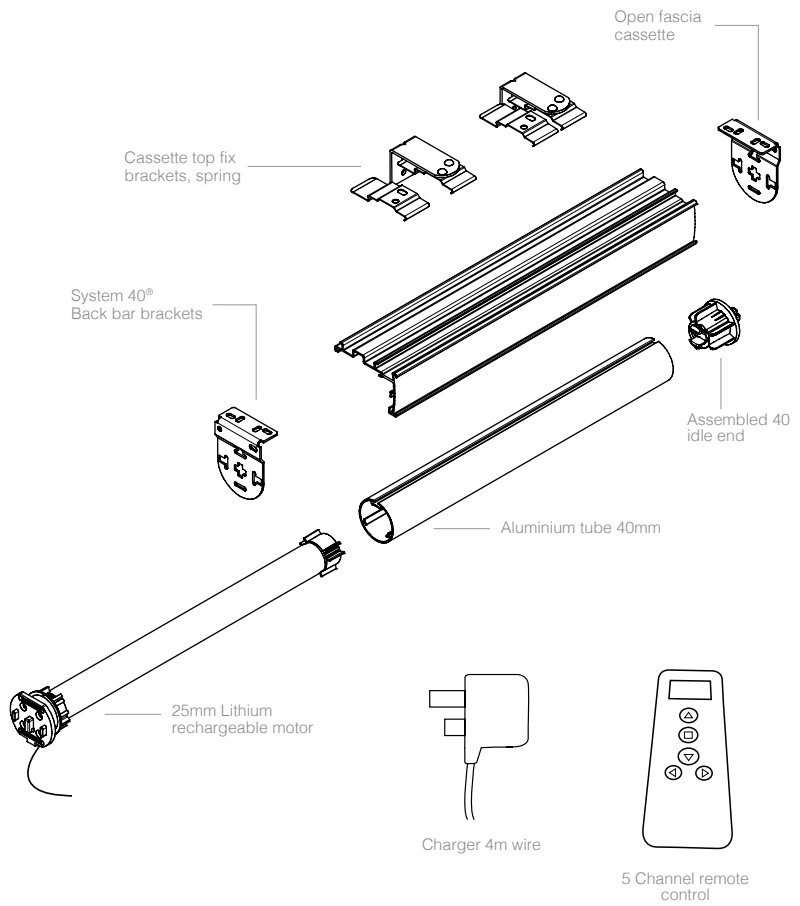


BLOCKOUT SYSTEM 40®/55® - ROLLER CASSETTE

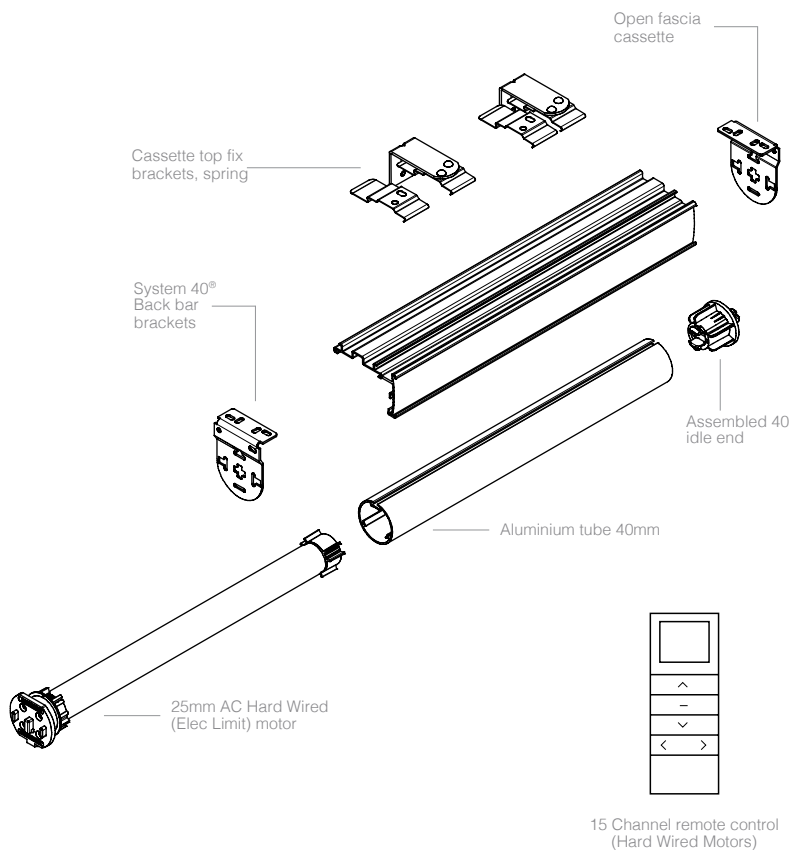




**COMPONENTS FOR ONE TOUCH™
RECHARGEABLE LITHIUM MOTOR WITH REMOTE - 40MM TUBE**

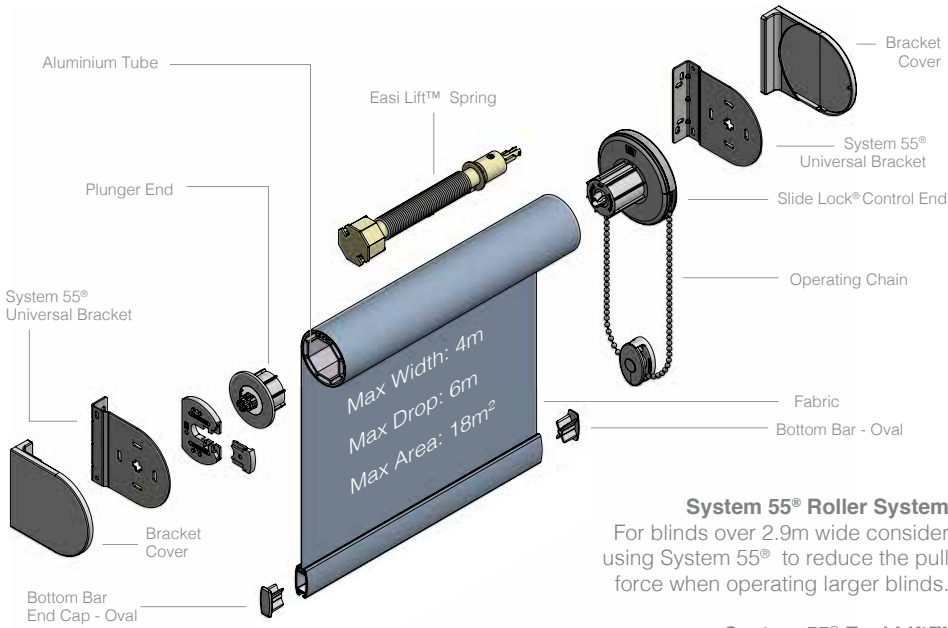


**COMPONENTS FOR ONE TOUCH™
MOTORISED HARD WIRED AC MOTOR - 40MM TUBE WITH REMOTE**



SYSTEM 55® ROLLER SYSTEM AND EASI LIFT™

Diagram shows: System 55®, Face Fix - Standard Metal Bracket and Easi Lift™



System 55® Roller System

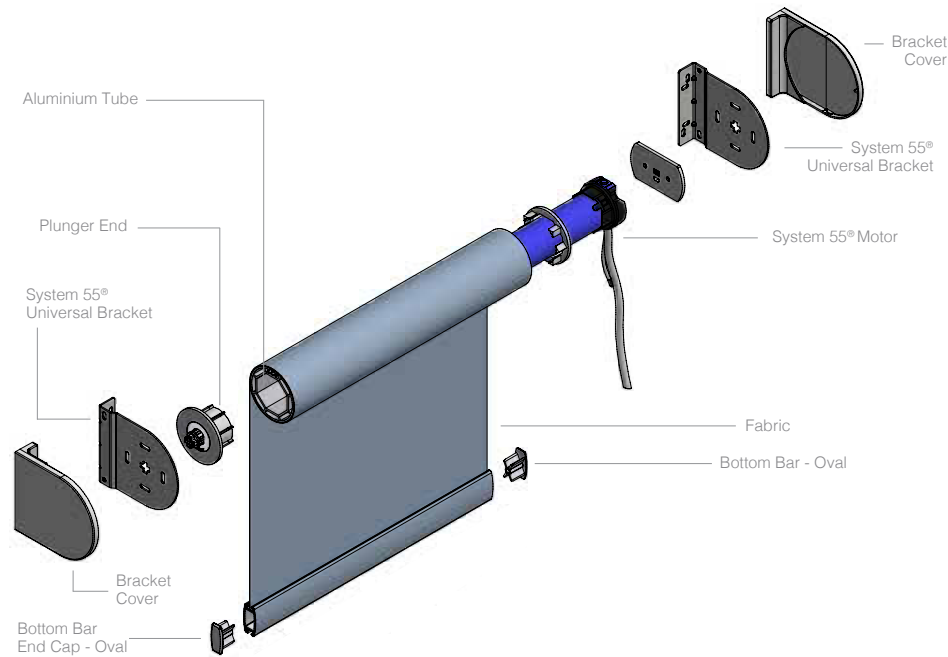
For blinds over 2.9m wide consider using System 55® to reduce the pull force when operating larger blinds.

System 55® Easi Lift™

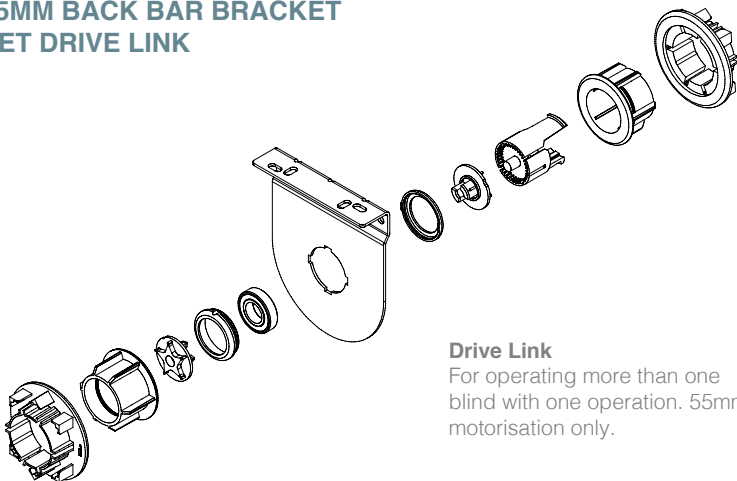
Raise and lower larger blinds effortlessly with System 55® Easi Lift™

SYSTEM 55® MOTORISED ROLLER SYSTEM

Diagram shows: System 55® Motorised Unit



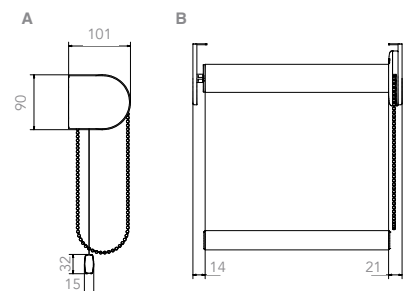
55MM BACK BAR BRACKET SET DRIVE LINK



Drive Link

For operating more than one blind with one operation. 55mm motorisation only.

SYSTEM 55® - BRACKET DIMENSIONS



- A. System 55® Standard Metal Bracket Face Fix
- B. System 55® Standard Metal Bracket Top Fix Front View

HARDWARE SPECIFICATION

SYSTEM 40®, SYSTEM 40+® AND SYSTEM 55®

Roller blinds should be manufactured using the Louvolite System 40®, 40+® or 55® roller blind mechanisms with their co-ordinating specifically designed grooved aluminium tubing. The specified fabrics should be formed and held into the tube with locking tape. The side control units should be manufactured in the UK and made from glass filled Nylon 6, with an acetal sprocket and sprocket guard and include a locking spring.

The operating chain should be No.10 size in metal or plastic to ensure reliable performance. The brackets used should be made from mild steel, zinc plated and powder coated and be suitable for top or face fixing.

A spring plunger end mechanism should be located at the opposite end to the control mechanism.

This provides a more secure fit of the blind between the brackets and enhanced smoothness of operation. The side control unit should be fitted with a centre plug that ensures the mechanism operates smoothly even under extreme loads.

PERFORMANCE

To ensure a positive performance, all Louvolite roller system units are manufactured in the UK using prime quality plastic materials and a dedicated steel locking spring. The sidewinders lock into the bracket with the unique bracket securing pin for safety after installation.

10 year life cycle testing is done to ensure long lasting performance. The units accept both metal or plastic rotation chains which provide smooth blind operation.



OPERATION

Operation is with No.10 metal or plastic rotation chain.

BOTTOM BAR

Bottom bar's are either aluminium or plastic and covered with fabric.



MAINTENANCE

All of the Louvolite roller blind system components are manufactured using aluminium, steel and plastic. They do not present any corrosion problems in normal environments. The system has been designed for a smooth operation, together with a rigidity to prolong the window blind's working life. Manufacturing guidelines for the size restrictions for each model are included in this specification brochure.

CASSETTE ROLLER BLIND SYSTEM

Roller blinds with cassettes should be manufactured as per standard Louvolite System 40®, 40+® or 55® and include the specially designed powder coated cassette system with dedicated top or face fix brackets.

GUIDE WIRE ROLLER BLIND SYSTEM

Roller blinds with guide wires should be manufactured as per the standard Louvolite System 40®, 40+® or 55® and include dedicated brackets, PVC coated wire and glass filled nylon plastic base or side fixing units.

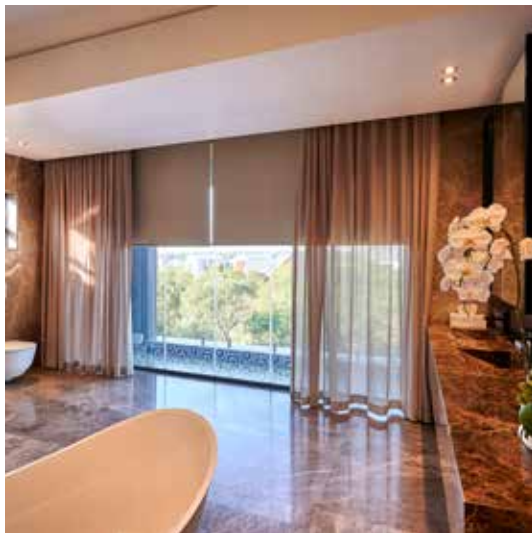


BLIND DESIGNS™
REFLECT YOUR STYLE

www.blinddesigns.co.za



BLIND DESIGNS™
REFLECT YOUR STYLE



REFLECT YOUR **STYLE**

***Style:** a distinctive appearance,
typically determined by the
principles according to which
something is designed.*